



CLUBVIEW ESTATES

at Andover Country Club

Clubview Drive - Left Unit Design

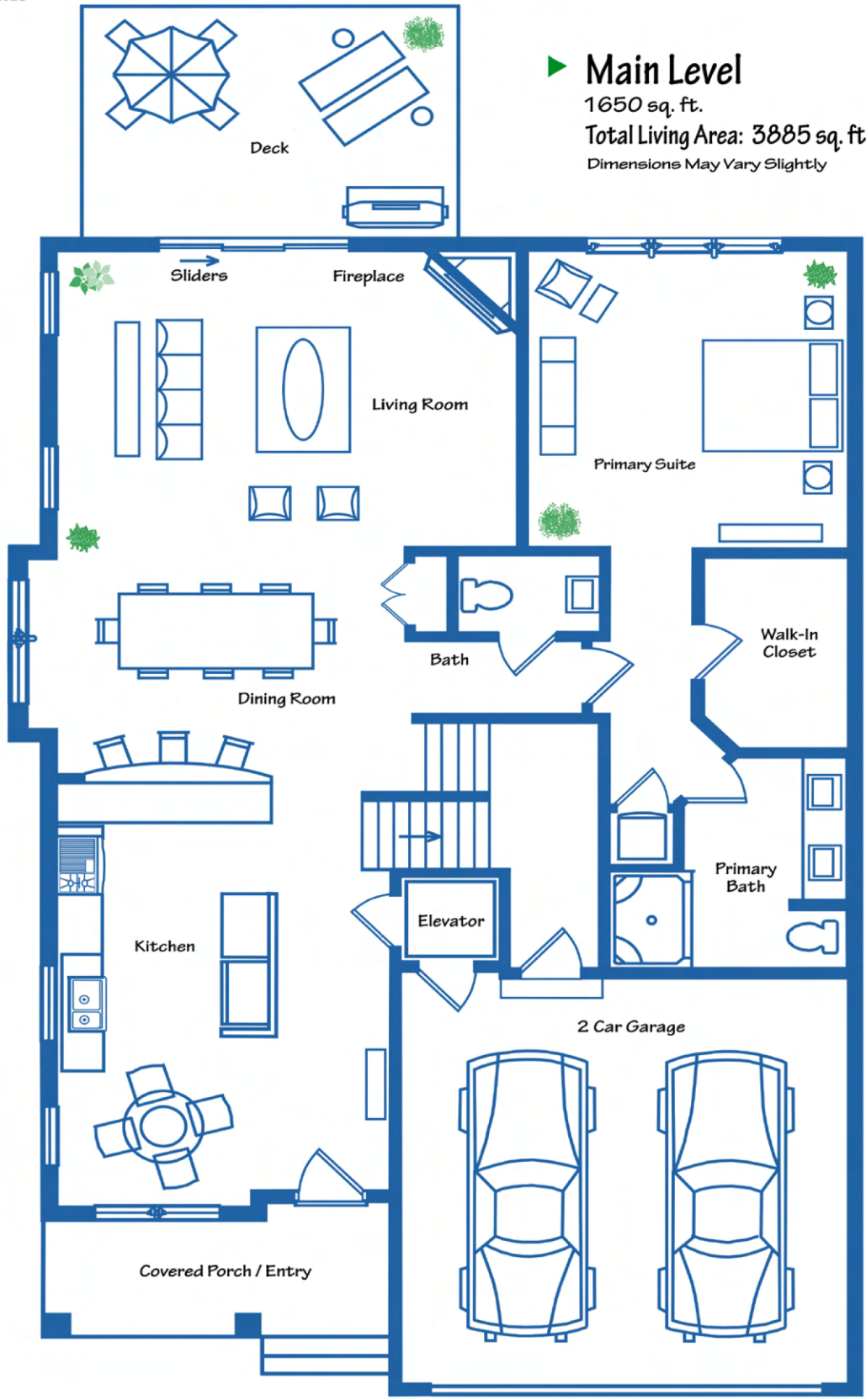
2+ Bedrooms - 3.5 Baths

► Main Level

1650 sq. ft.

Total Living Area: 3885 sq. ft.

Dimensions May Vary Slightly





**CLUBVIEW
ESTATES**

at Andover Country Club

Clubview Drive - Left Unit Design

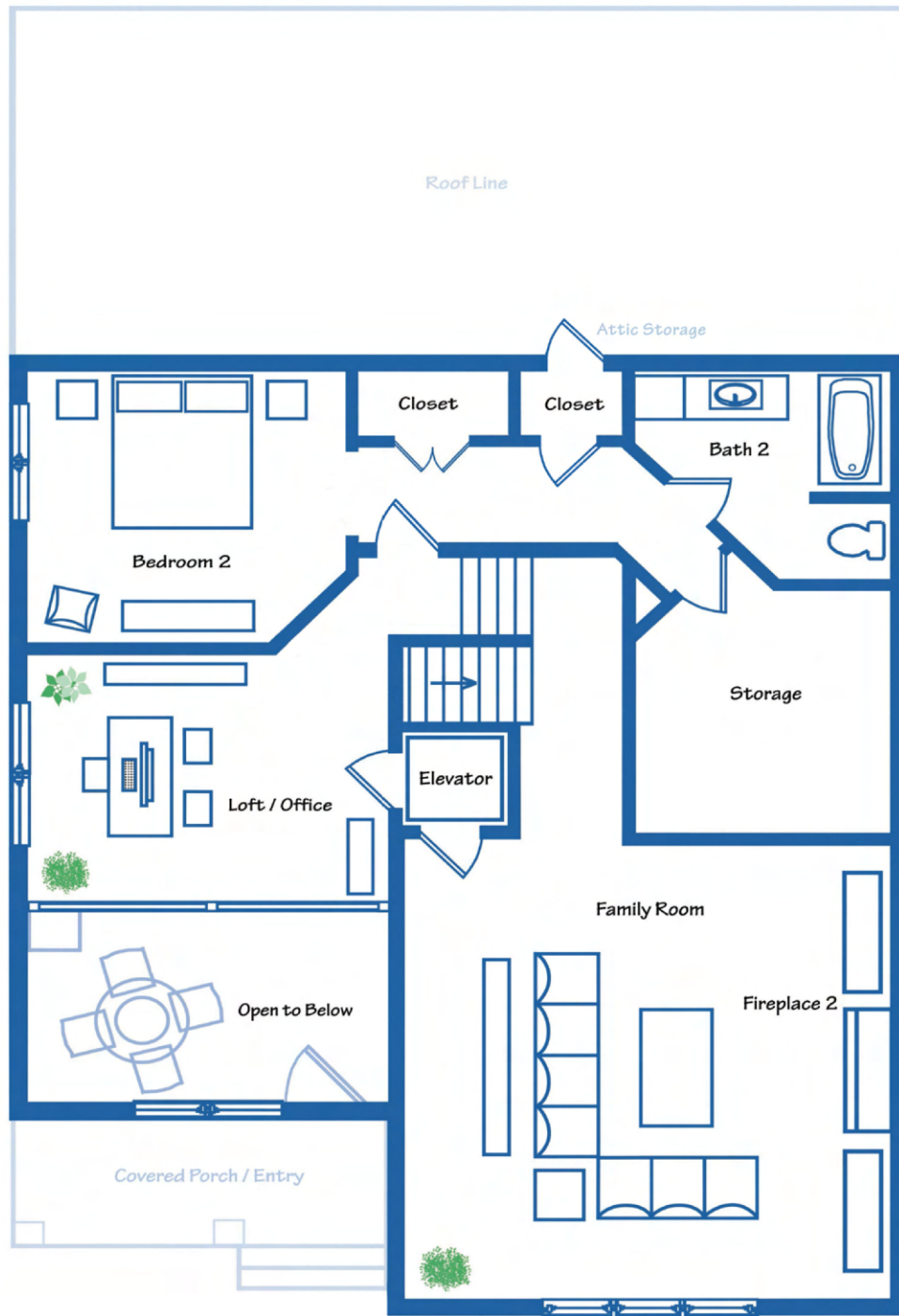
2+ Bedrooms - 3.5 Baths

► Upper Level

1335 sq. ft.

Total Living Area: 3885 sq. ft.

Dimensions May Vary Slightly



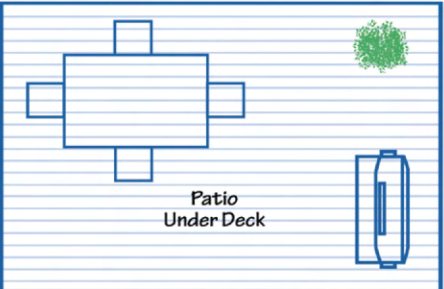


CLUBVIEW ESTATES

at Andover Country Club

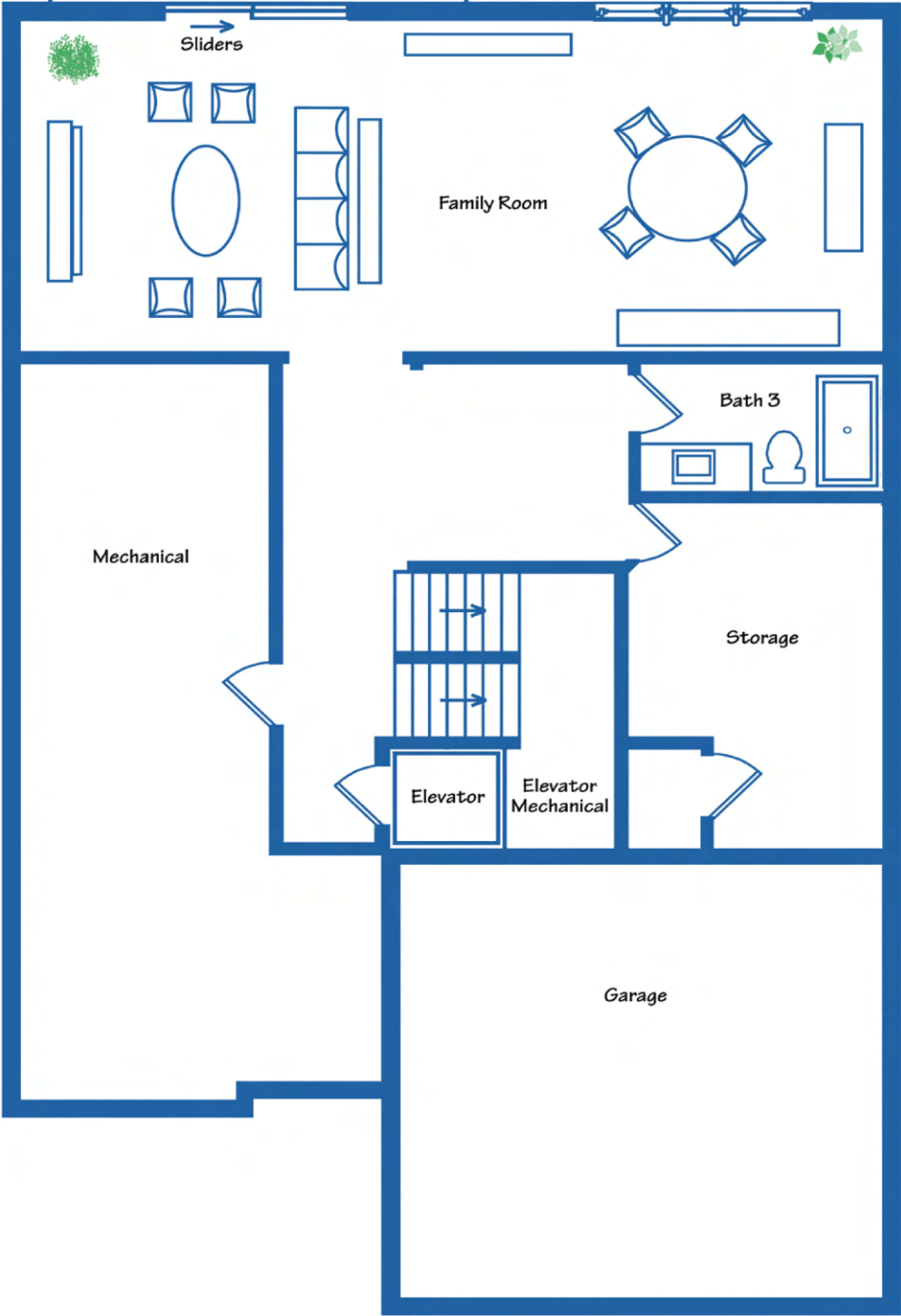
Clubview Drive - Left Unit Design

2+ Bedrooms - 3.5 Baths



Patio
Under Deck

► **Lower Level**
900 sq. ft.
Total Living Area: 3885 sq. ft.
Dimensions May Vary Slightly





CLUBVIEW ESTATES

at Andover Country Club

Clubview Drive - Middle Unit Design

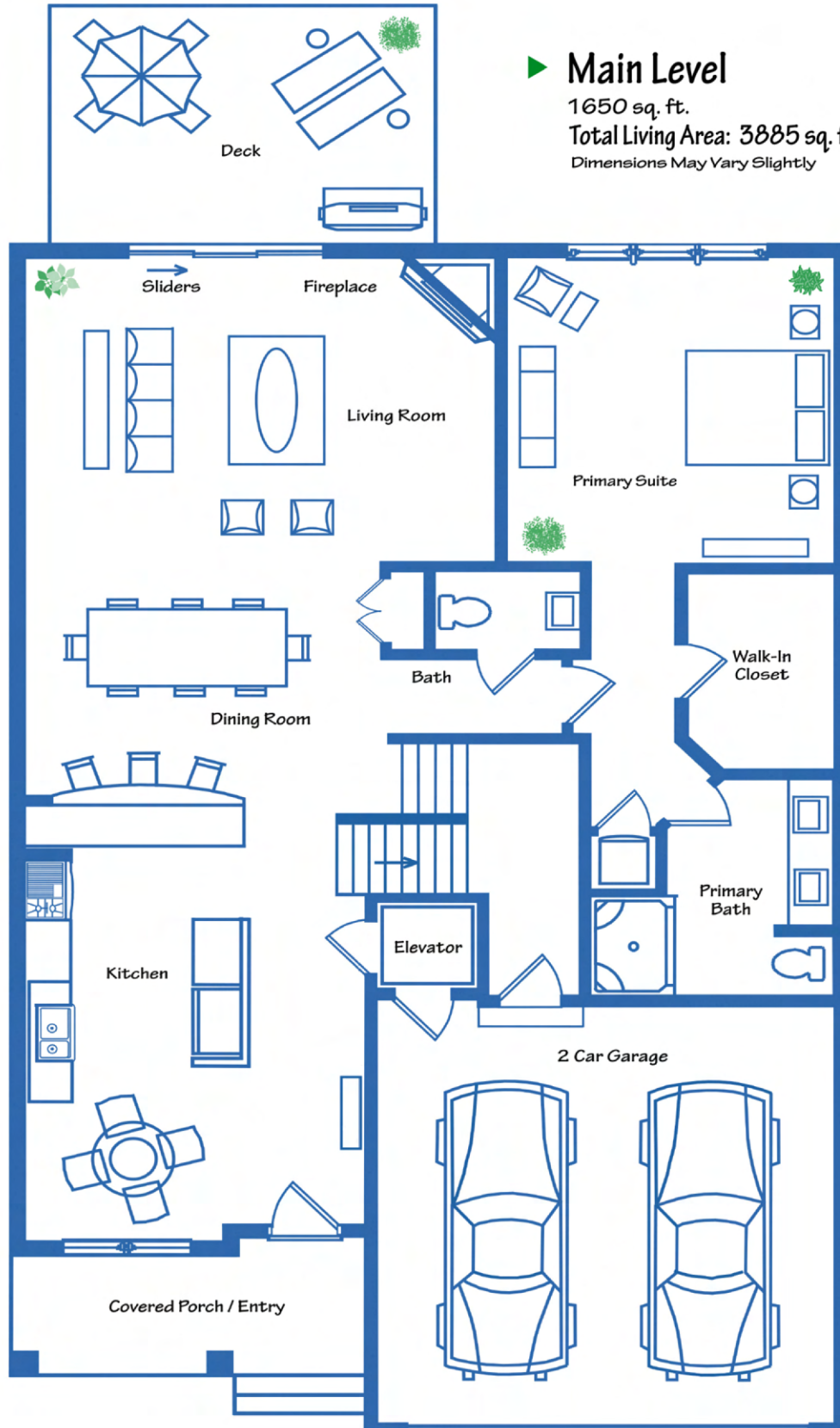
2+ Bedrooms - 3.5 Baths

► Main Level

1650 sq. ft.

Total Living Area: 3885 sq. ft.

Dimensions May Vary Slightly





**CLUBVIEW
ESTATES**

at Andover Country Club

Clubview Drive - Middle Unit Design

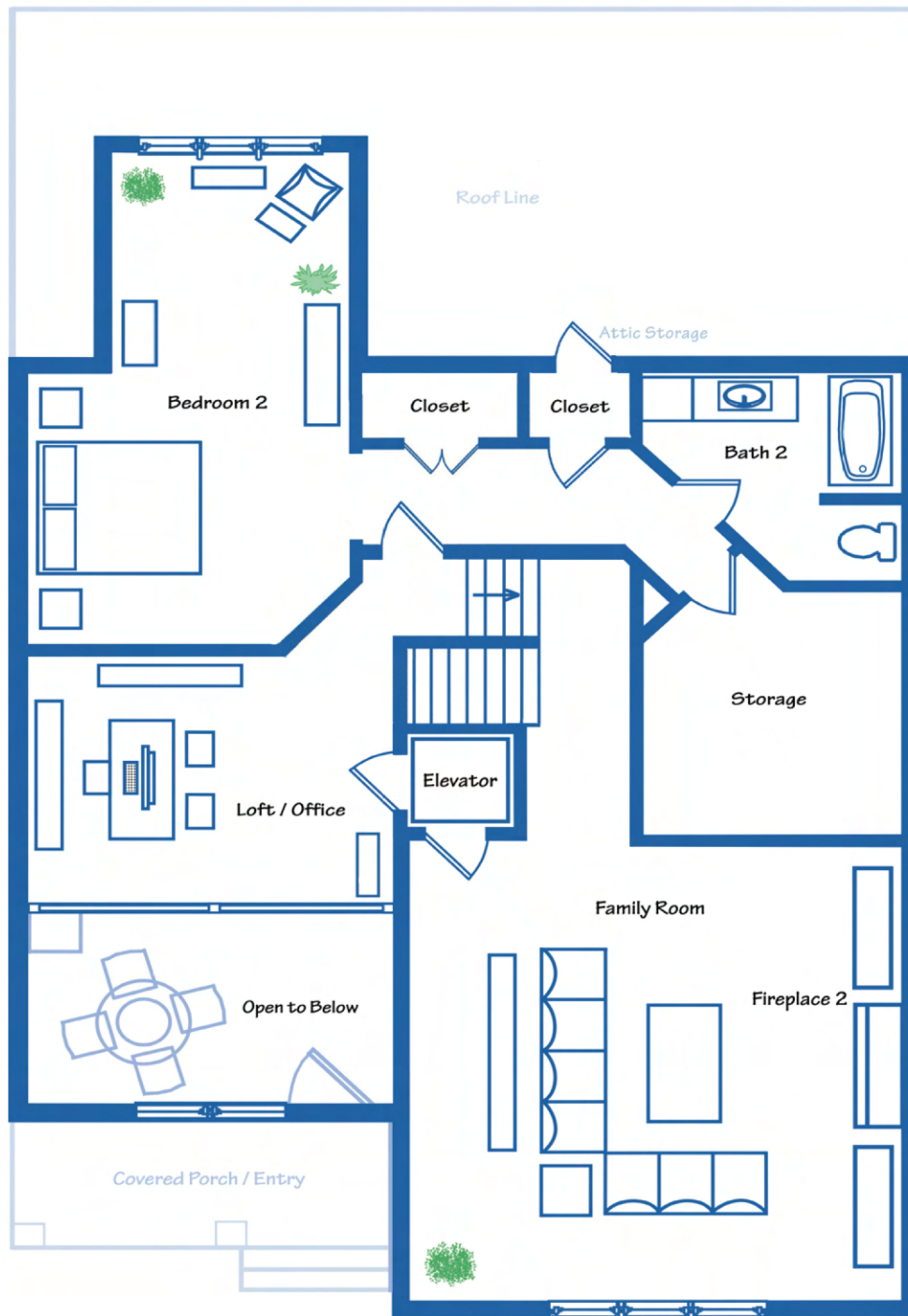
2+ Bedrooms - 3.5 Baths

► Upper Level

1335 sq. ft.

Total Living Area: 3885 sq. ft.

Dimensions May Vary Slightly



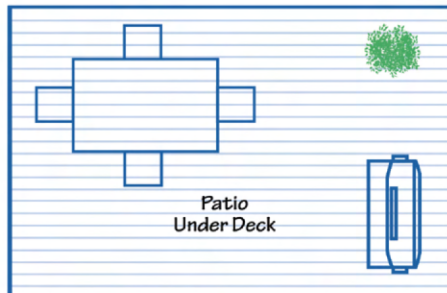


CLUBVIEW ESTATES

at Andover Country Club

Clubview Drive - Middle Unit Design

2+ Bedrooms - 3.5 Baths



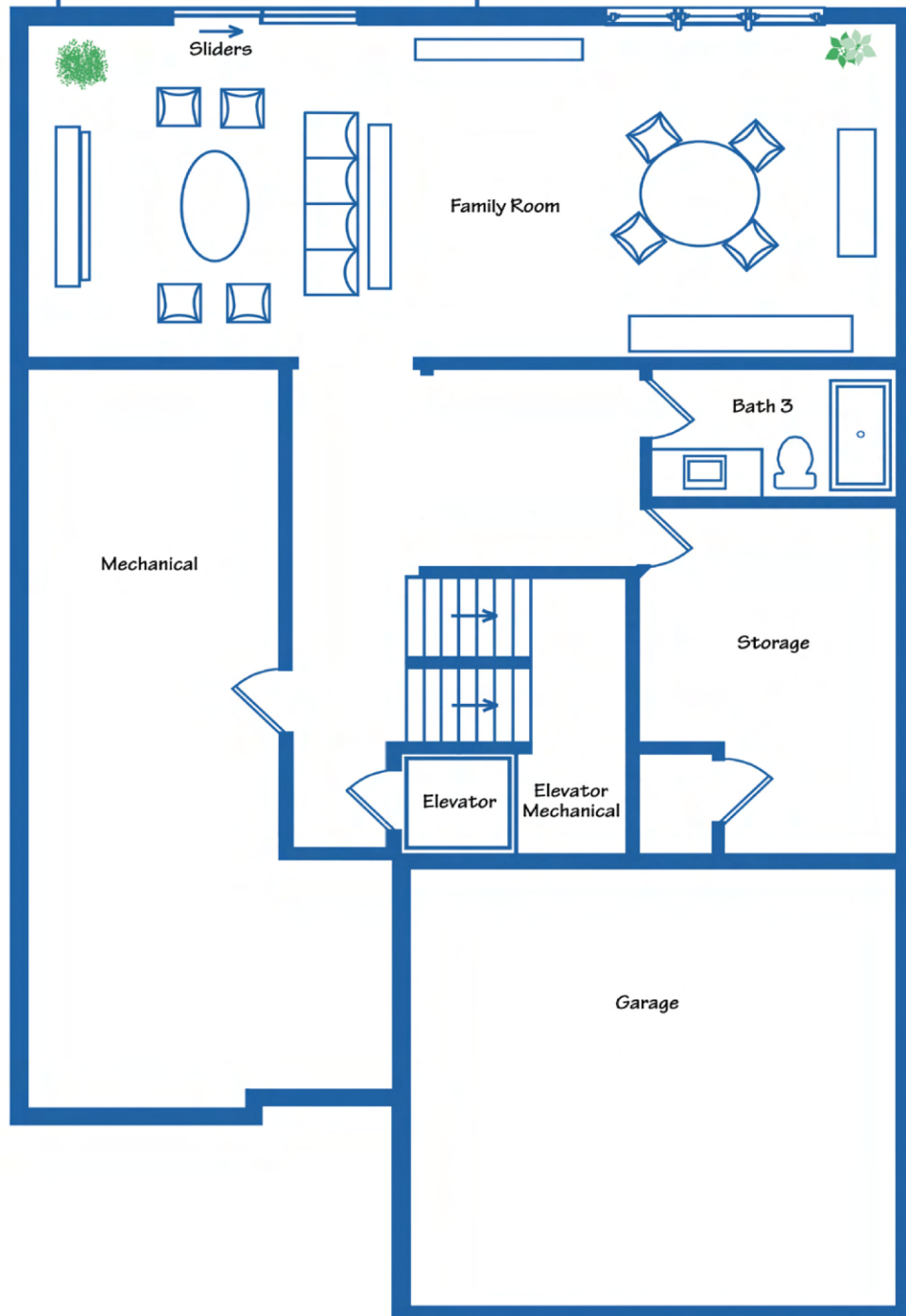
Patio
Under Deck

► Lower Level

900 sq. ft.

Total Living Area: 3885 sq. ft.

Dimensions May Vary Slightly





**CLUBVIEW
ESTATES**

at Andover Country Club

Clubview Drive - Right Unit Design

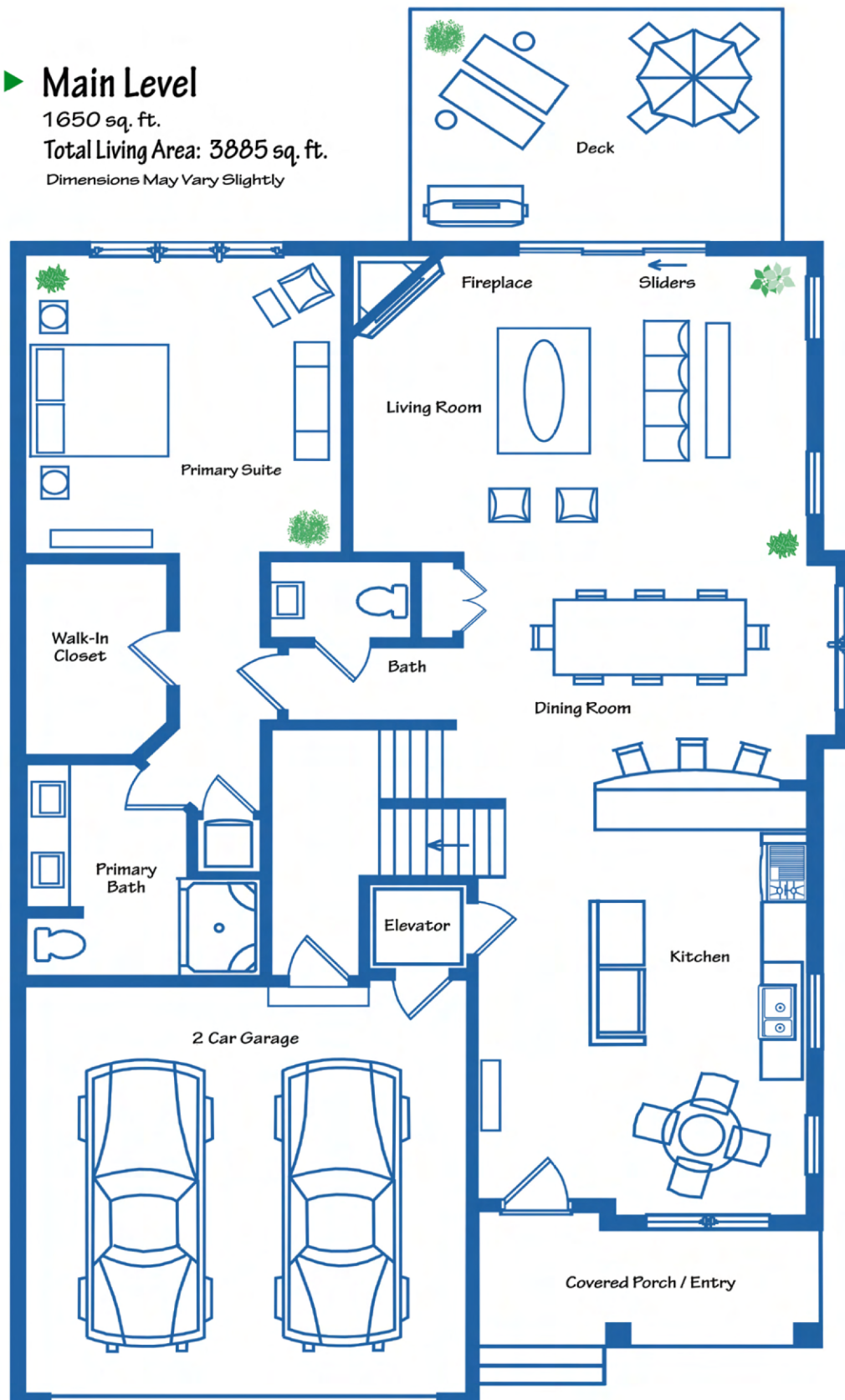
2+ Bedrooms - 3.5 Baths

► Main Level

1650 sq. ft.

Total Living Area: 3885 sq. ft.

Dimensions May Vary Slightly





**CLUBVIEW
ESTATES**

at Andover Country Club

Clubview Drive - Right Unit Design

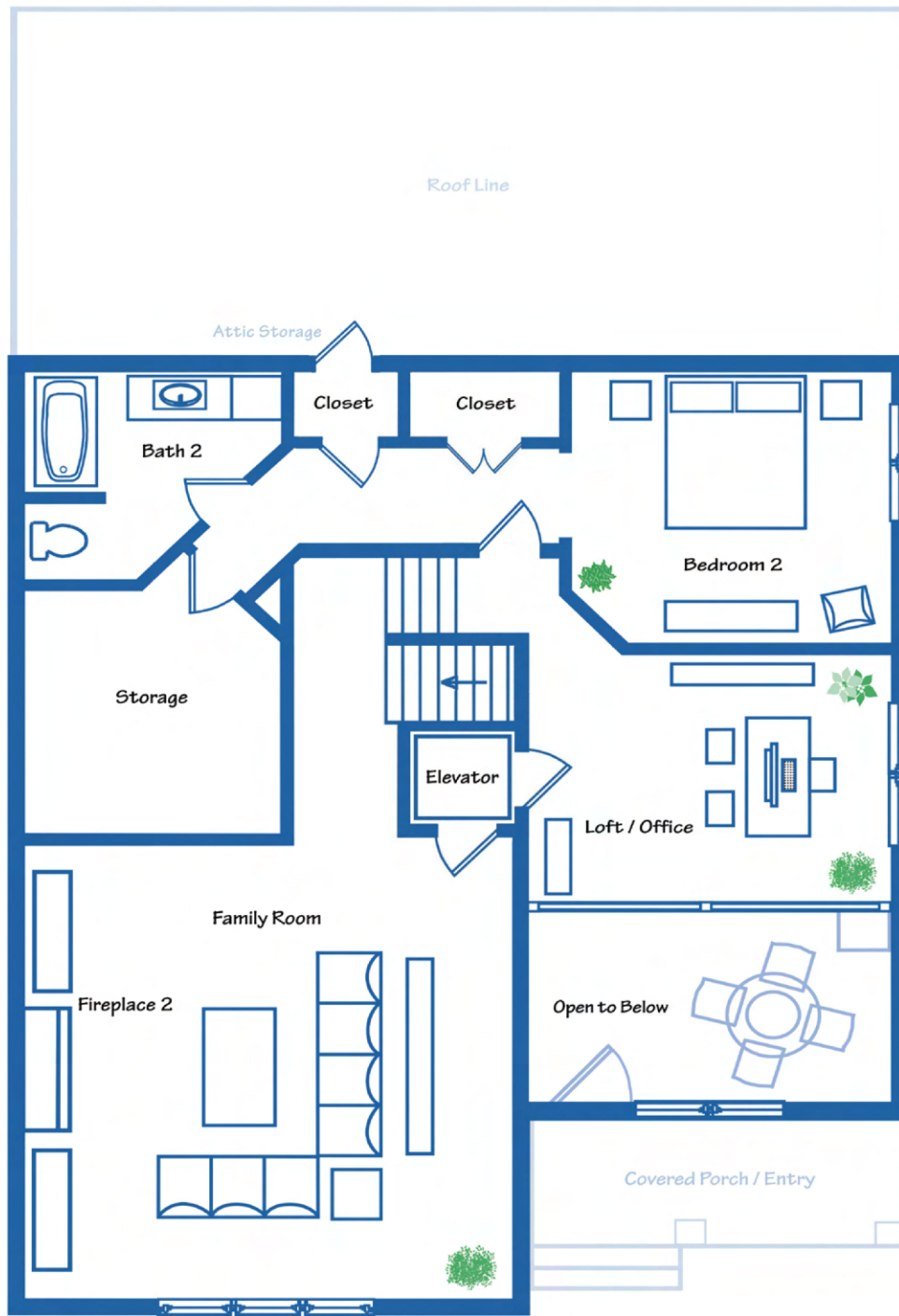
2+ Bedrooms - 3.5 Baths

► Upper Level

1335 sq. ft.

Total Living Area: 3885 sq. ft.

Dimensions May Vary Slightly





**CLUBVIEW
ESTATES**

at Andover Country Club

Clubview Drive - Right Unit Design

2+ Bedrooms - 3.5 Baths

► **Lower Level**

900 sq. ft.

Total Living Area: 3885 sq. ft.

Dimensions May Vary Slightly

